



Cannabis Control Commission Public Meeting

In-Person and Remote via Teams



Meeting Book - Cannabis Control Commission Public Meeting

Table of Contents

Call to Order

Meeting Agenda 12.05.2024.docx

Commission Discussion & Votes

12-5-2024 Presentation.pdf

Next Meeting Date & Adjournment



December 3, 2024

In accordance with Sections 18-25 of Chapter 30A of the Massachusetts General Laws and Chapter 2 of the Acts of 2023, notice is hereby given of a meeting of the Cannabis Control Commission. The meeting will take place as noted below.

CANNABIS CONTROL COMMISSION

**December 5, 2024
10:00 AM**

**Worcester Union Station
2 Washington Square
Worcester, MA 01604**

**In-Person and Remote via [Microsoft Teams](#)
PUBLIC MEETING AGENDA**

- I. Call to Order
- II. Commission Discussion and Vote
 - 1. Presentation and Discussion of Social Consumption Regulatory Framework
Social Consumption Working Group
- III. New Business Not Anticipated at Time of Posting
- IV. Next Meeting Date
- V. Adjournment

*Closed captioning available

If you need reasonable accommodations in order to participate in the meeting, contact the ADA Coordinator Debra Hilton-Creek in advance of the meeting. While the Commission will do its best to accommodate you, certain accommodations may not be available if requested immediately before the meeting.





Social Consumption

Regulatory Framework Presentation

December 5, 2024

Commissioner Camargo and Acting Chair Stebbins



Agenda

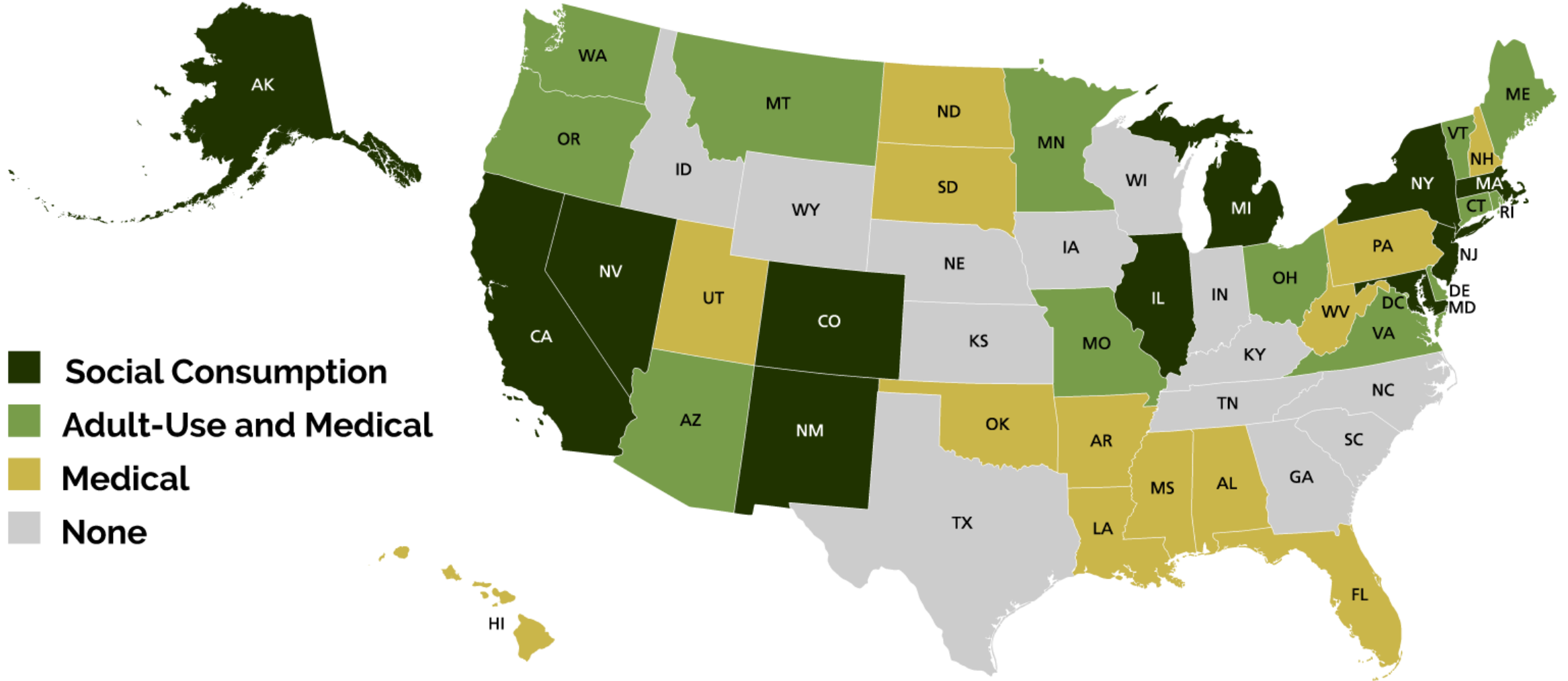
1. Introduction
2. How We Got Here and Why Now
3. Outreach and Policy Development
4. Social Consumption License Classes
5. Policy Considerations
6. Implementation

What is a Social Consumption Establishment?

A Marijuana Establishment licensed by the Commission where Consumers can purchase and safely consume Marijuana and Marijuana Products.

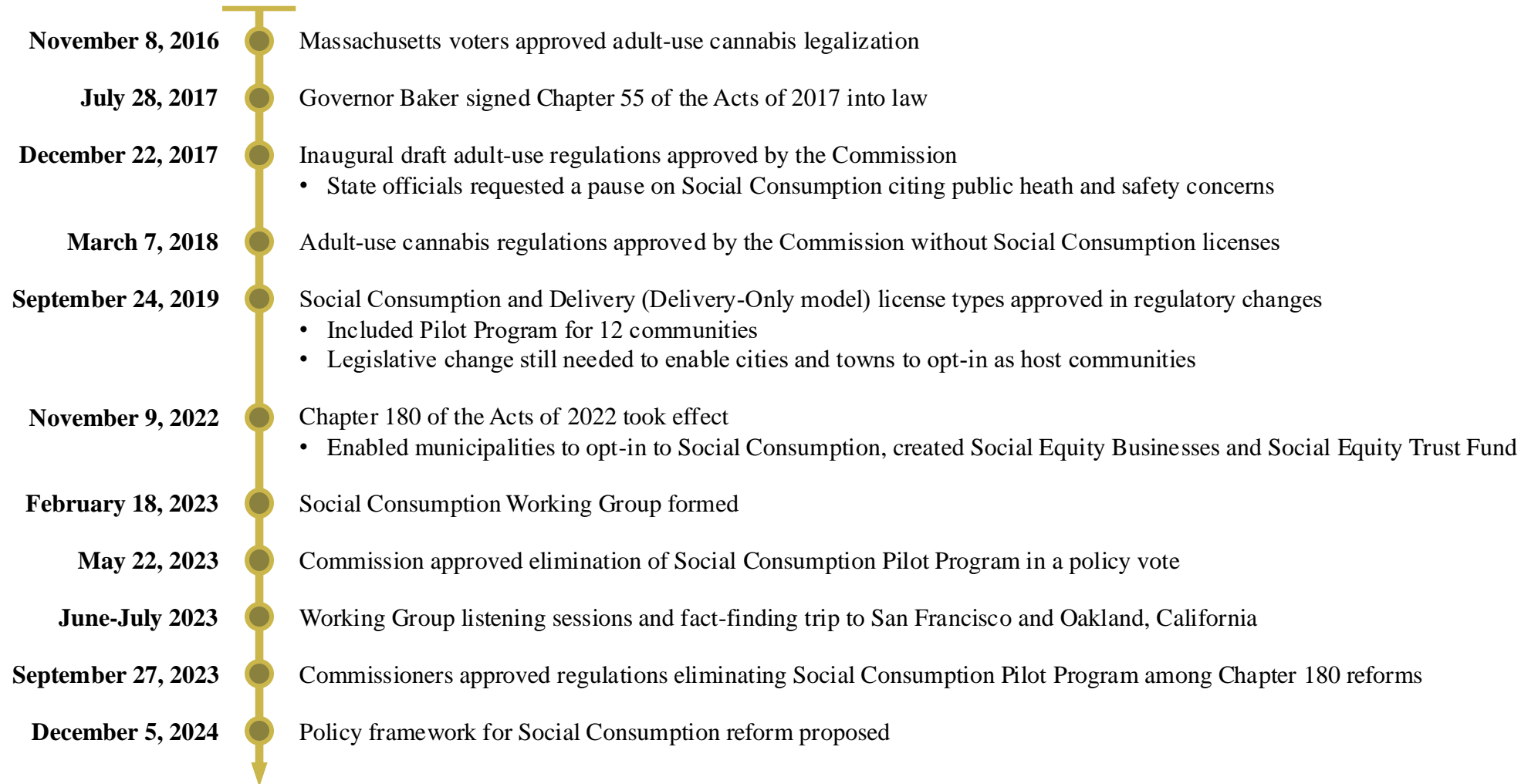


State of Social Consumption



How We Got Here and Why Now

Regulatory Timeline As of December 5, 2024



How We Got Here and Why Now

Chapter 180 of the Acts of 2022 "AN ACT RELATIVE TO EQUITY IN THE CANNABIS INDUSTRY" provided key tools to help support the Social Consumption License Regulatory Framework

- (1) 94G was amended to allow communities to allow social consumption through referendum and expanded option to permit cities or towns to opt in by by-law or ordinance change
- (2) Created Social Equity Fund to support the needs of Social Equity Business, Social Equity and Economic Empowerment Participants to access critical capital resources
 - Managed by Executive Office of Economic Development
- (3) Required Host Communities to adopt Social Equity strategies for their community that may support SE, EE and SEB license applicants (by May 1, 2024)
- (4) Streamlined the Host Community Agreement process
- (5) Allows combustion, heating, vaporization or aerosolization of cannabis products, at a licensed marijuana social consumption establishment.



How We Got Here and Why Now

Department Collaboration with Social Consumption Regulatory Working Group

- Administration & Operations
- Constituent Services
- Communications
- Digital and Creative Services
- Enforcement Counsel
- Equity Programming and Community Outreach
- Finance
- Government Affairs and Policy
- Human Resources
- Information Technology
- Investigations Team
- Legal
- Licensing
- Project Management
- Research
- Testing



Outreach and Policy Development

- Trainings
 - Two full RVT training sessions
 - Drug Recognition Expert (DRE) training
 - TIPS certification training
- Public Listening Sessions
 - Holyoke Community College: June 27, 2023
 - Virtual Listening Session: July 18, 2023
 - Mass Bay Community College: July 20, 2023
- State Regulator Outreach
 - CA, CO, IL, MI, NJ, NM, NY, and NV
- Local Outreach
 - Commission survey to potential applicants: Economic Empowerment Applicants, Social Equity Program Participants, Microbusinesses, and Craft Marijuana Cooperative license applicants
 - Existing Smoking Establishments
- Key Stakeholder Outreach



Outreach and Policy Development

Key Stakeholder Outreach

- Appointing Authorities
- Alcohol Beverage Control Commission
- Cannabis Advisory Board
- Commercial Real Estate Professionals
- Equitable Opportunities Now (EON)
- Executive Office of Public Safety and Security
- Insurance Brokers
- Joint Committee on Cannabis Policy Co-Chairs
- Local Boards of Public Health
- Local Marijuana Establishment Owners
- Local and Nationwide Creative Cannabis Agencies
- Nationwide Event Facilitators
- Nationwide Social Consumption Brands
- City of Boston
- City of Cambridge
- City of Chelsea
- City of Holyoke
- City of Northampton
- Town of Provincetown
- City of Somerville
- City of Springfield



Outreach and Policy Development

Key Stakeholder Outreach

- Massachusetts Cannabis Business Association
- Massachusetts Cannabis Coalition's Social Consumption Subcommittee
- Massachusetts Chiefs of Police
- Massachusetts Department of Public Health
- Massachusetts District Attorneys Association
- Massachusetts Marijuana Establishment Owners
- Massachusetts Municipal Association
- Massachusetts Municipal Police Training Committee
- Massachusetts Patients Advocacy Alliance
- Massachusetts Regional Tourism Councils
- Massachusetts Restaurant Association
- Occupational Safety and Health Administration





Break

On-Site Social Consumption License Classes

SUPPLEMENTAL

For: Existing, qualifying MEs, including Cultivators, Product Manufacturers, Retailers, Microbusinesses, Craft Marijuana Cooperatives or Delivery Operators

- On-site Consumption allowed within or attached to an existing ME
- May host social consumption activities within existing facility or adjoining space
- Consumers may consume product purchased on site
- Examples: ME with an On-site Consumption Space attached – Lounge, Café, Tasting Room, etc.

HOSPITALITY

For: Qualifying Consumption Licensee in a new or existing non-cannabis commercial business space

- On-site Consumption allowed within a new cannabis business, or attached to an existing non-cannabis business
- Mixed-use space allowed as a partnership with a non-cannabis business
- Examples: Lounge, Café, Entertainment/Recreational Space, Yoga Studio, Theater, Lodging Space

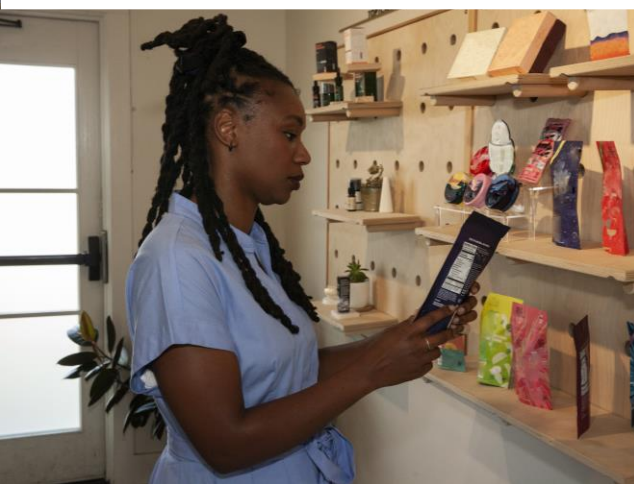
EVENT ORGANIZER

For: Qualifying Entities may organize and host Temporary Consumption Events.

- Only ME Licensees can participate in the Event
- Temporary On-site Consumption Permit allowed at single or multiple locations
- May store/purchase cannabis at Principal Place of Business (PPB)
- HCA required at PPB, local permitting and approval needed for Temporary Consumption Events
- Events no more than five days in length nor more than 24 events per year



Supplemental License Type



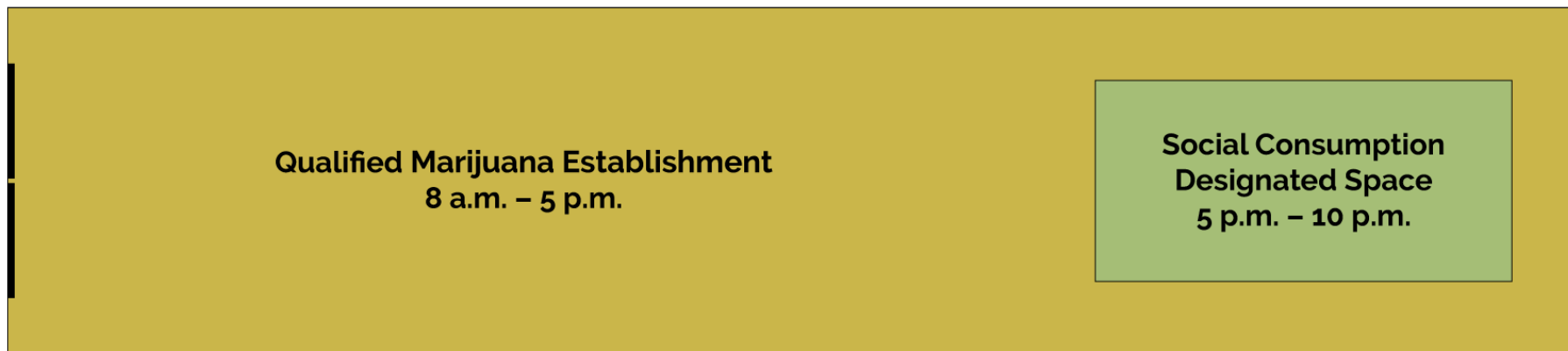
Supplemental License Type

- For qualified Cultivators, Product Manufacturers, Retailers, Microbusinesses, Craft Cooperative Grower Licensees, or Delivery Operators
- Host social consumption activities within existing facility or adjoining space
- Consumption of product purchased on site



Supplemental License Type

- Social Consumption Designated Space
- Qualified Marijuana Establishment

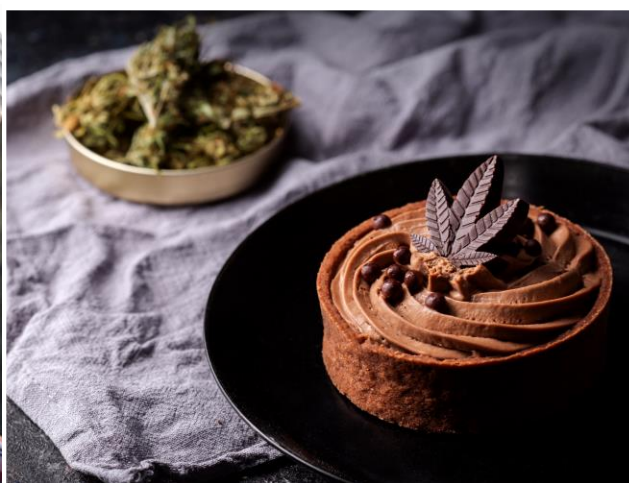


Hospitality License Type



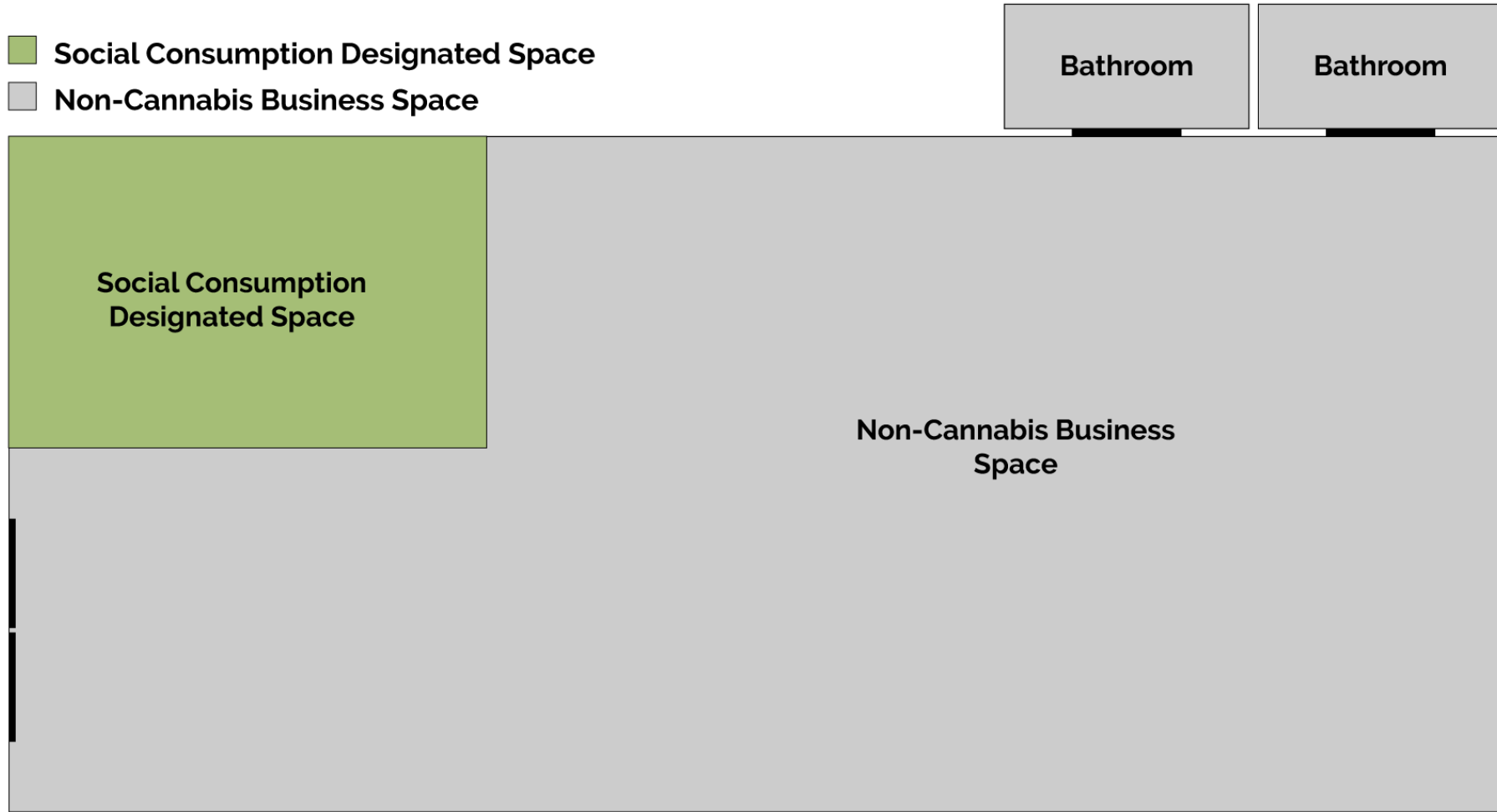
Hospitality License Type

- License for a qualified social consumption business within a new or existing commercial business space
- Partnership of Eligible Cannabis Business and Non-Cannabis Business
- Consumption of product purchased on site
- Examples: Lounge, Café, Entertainment or Recreational Space, Comedy Club, Yoga Studio, Theater, Lodging Space etc.



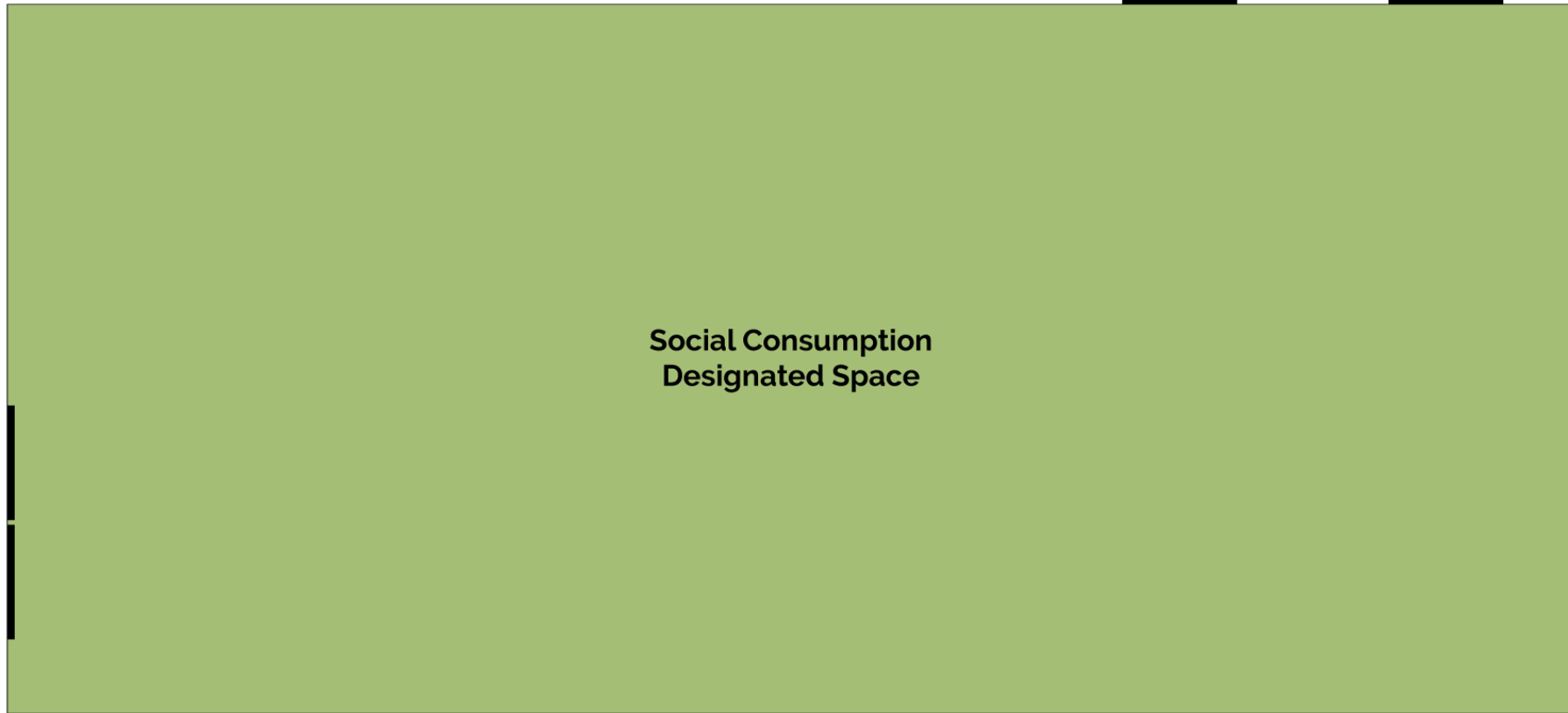
Hospitality License Type

-  Social Consumption Designated Space
-  Non-Cannabis Business Space



Hospitality License Type

-  Social Consumption Designated Space
-  Not Applicable



Event Organizer License Type



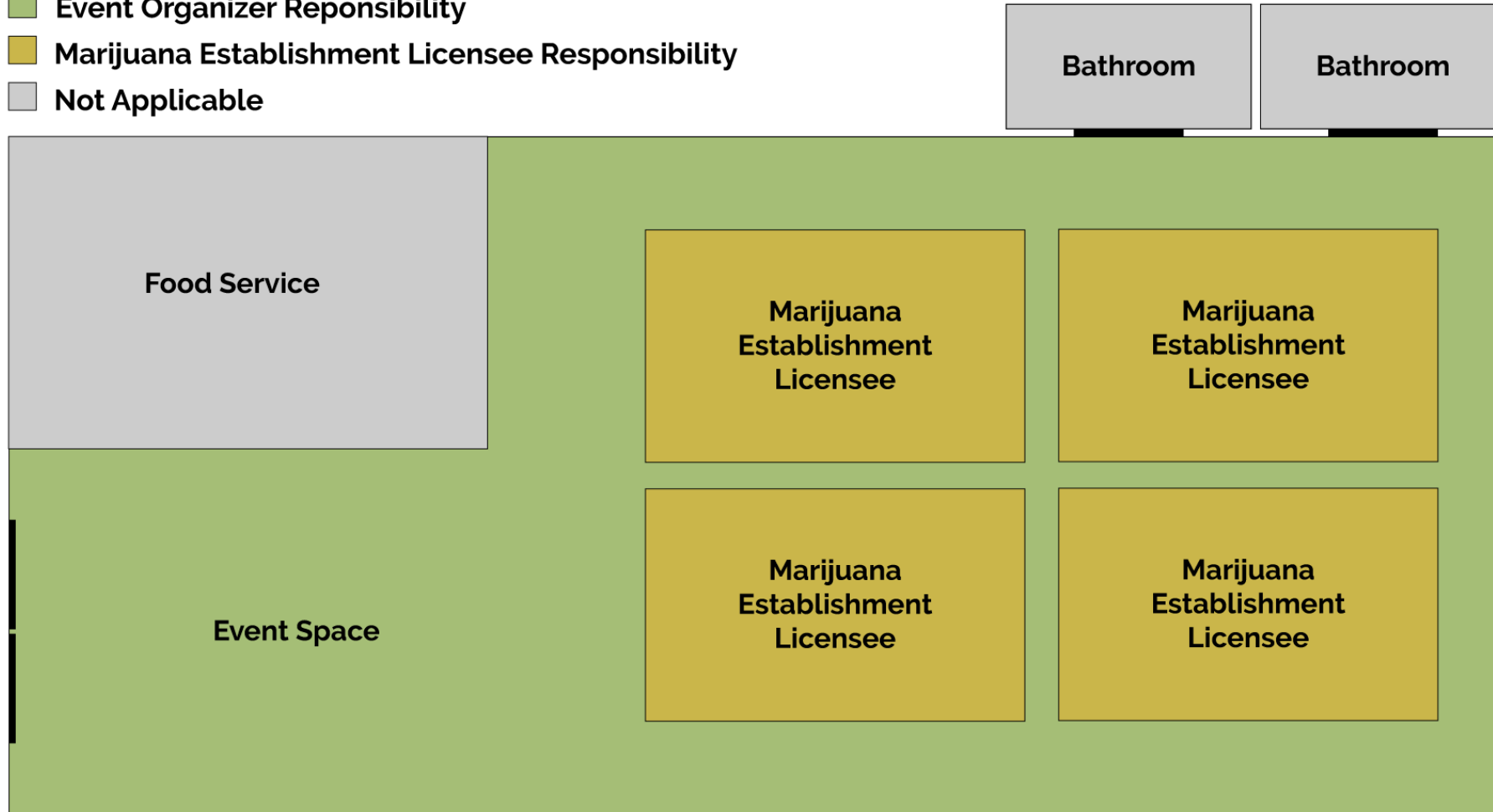
Event Organizer License Type

- Low start-up cost opportunity
- May store cannabis at PPB and purchase wholesale for retail at Temporary Consumption Events (TCE)
- Only ME Licensees may participate in TCEs
- Local permitting and approval process required
- Events no more than 5 days in length and no more than 24 events per year



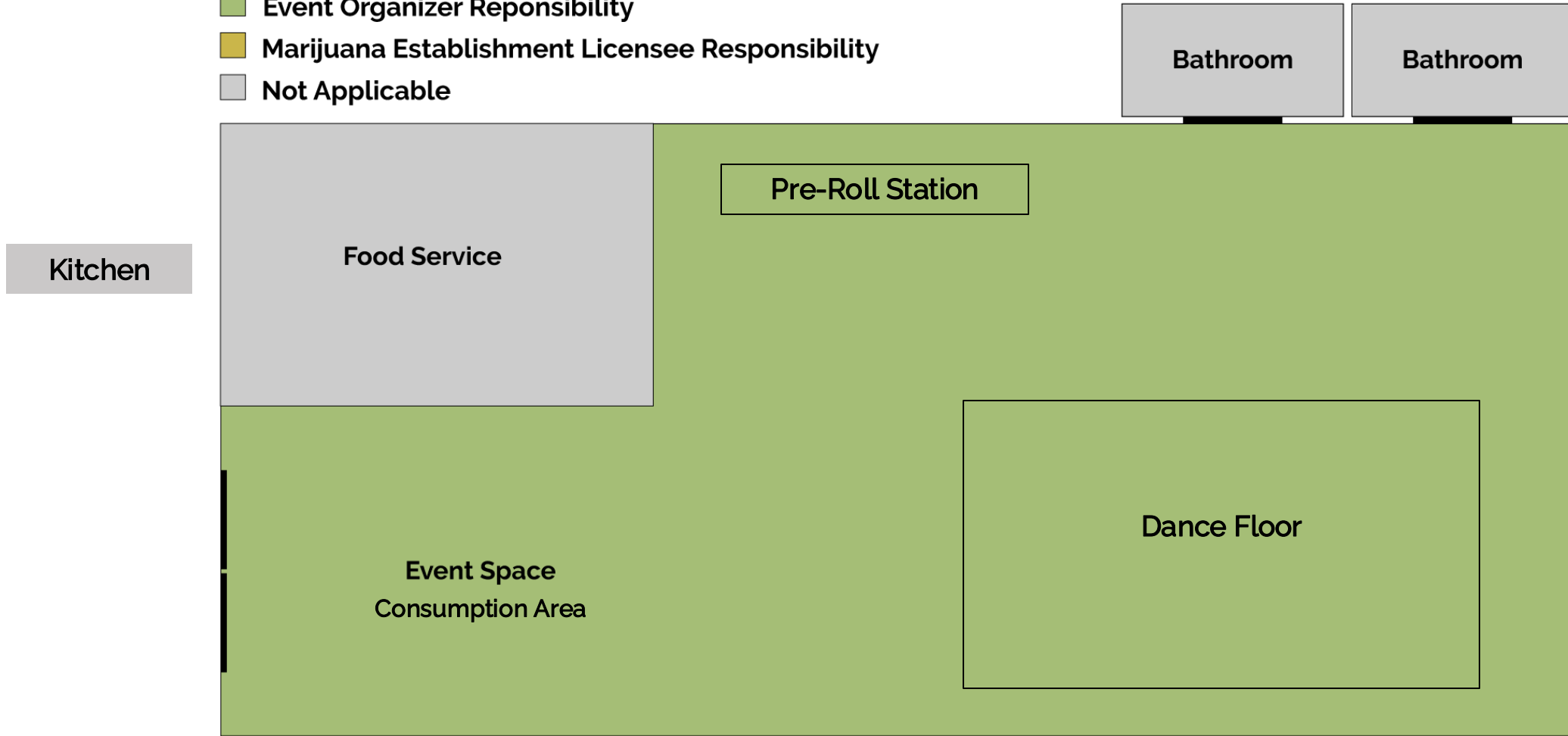
Event Organizer License Type: Example A

- Event Organizer Responsibility
- Marijuana Establishment Licensee Responsibility
- Not Applicable



Event Organizer License Type: Example B

- Event Organizer Responsibility
- Marijuana Establishment Licensee Responsibility
- Not Applicable





Feedback

Policy Considerations

Public Health and Public Safety:

- Employee safety (e.g., ventilation, signage)
- No intersection of alcohol or tobacco and tobacco products within licensed spaces/ premises
- Provide for employee safety with PPE and right to be shifted to other job responsibilities at employee's request
- Special Responsible Vendor Training (RVT) requirements for all registered agents working at a Social Consumption Establishment with focus on Drug and Alcohol Impairment Recognition
- Standard Operating Procedures for “cool down strategies” to help customers with adverse reactions



Policy Considerations

Public Health and Public Safety (cont'd):

- 30-minute cut-off before posted closing hour of licensee
- Transportation strategy still required for all licensees to assist impaired consumers
- Product menu information to include projected times for onset to be provided by licensee
- ID checks to confirm attendees are ages 21+ required prior to entry
- No cannabis products to be brought into a Social Consumption Establishment; personal product to be disposed, stored or customer must leave premise
- Dosage Increase from Original Social Consumption Regulations



Policy Considerations

Exclusivity Period:

- Exclusivity period for all Social Consumption License Types extended to 60 months
(5 years) after first Hospitality On-site Social Consumption Licensee Commences Operations
- Current regulations allow for three-year exclusivity period

Air Quality:

- Air handling system requirement will depend on planned activities
- Existing regulations were strengthened and enhanced
- Regulatory allowance for Executive Director to give approval and authorization of new consumption products, methods, and technology

Patient Access:

- Access for Qualified Patients



Policy Considerations

Food:

- Food services to be required at all licensed Marijuana Establishments
- Food and any infused cannabis products must be served to Consumer separately
- Food service training to be required at establishments where food is prepared on site
- Options also include delivery services or partnerships with existing and possibly adjacent restaurants/food establishment
- Limited research does show food consumption can slow onset of THC



Implementation

Presentation of Regulatory Framework- December 5

Recap of Working Group deliverables and outcomes
Presentation of regulatory framework

Policy Discussion- December 17

Red-Lined Regulations released
Informal public comment period to begin upon
Commission vote and extend for 30 business days

Regulatory Drafting and Promulgation

Draft regulations public meeting discussion
Initiate formal public comment period
Final regulations public meeting discussion

Implementation

Regulatory Drafting and Promulgation

Intended Regulatory Timeline	Intended Timeframe
Release Draft of Redline Regulations to Commissioners	Dec. 9
Release Redlined Regulations for Informal Comments	On or around December 17
Close of Informal Comment Period	One month
Working Group to Edit Regulations	Three-week period
Commissioners to Redline Regulations in Public Meeting	One week
Formal Notice of Public Hearing	One week
Commission to File Redlined Regulations with Secretary of State	Two-weeks
Formal Public Comment Period (including outreach to CAB and key stakeholders)	Three-weeks
Public Hearing on Regulations	One day
Commission Edits to Regulations based on Public Comments	Three-week period
Commissioner Edits to Regulations in Public Meeting	One week
Commission to File with Secretary of State	Two-weeks
Secretary of State to Publish	About three months from initial filing (goal of mid-2025)



Implementation

Internal Implementation

- Commission internal impact assessment and implementation procedures
- Application development
- Guidance materials
- Licensing updates
- RVT curricula updates and training
- Creation of Implementation Working Groups
- Development of public education campaign
- Inspections and Enforcement SOP developments
- Social Equity Program Curriculum Update-Social Consumption Track

Internal Implementation (continued)

- Outside vendor updates (e.g., MassCIP, Metrc)
- Responses to RVT solicitation
- Secure funding for public education campaign
- Secure funding for additional personnel

External Implementation

- Municipal decisions
 - Opt-in by Ordinance, Bylaw or Petition
 - Revisions to zoning codes
 - Development of social equity strategies
 - HCAs
 - Local permitting processes
- Licensee business decisions
 - Infrastructure
 - Compliance
 - Partnerships
 - Capital Access



Implementation

Establishing Implementation Working Groups to assist the Commission with the Introduction of Social Consumption Licenses

- **Public Education Campaign** – Working with our Communications Division and partners to message responsible consumption and policy changes
- **Social Consumption Responsible Vendor Training** – Partnering with stakeholders to create a successful training curriculum for Marijuana Agents
- **Municipal Advisory** – Helping communities to understand and adopt social consumption license types, guidance, bylaws and best practices
- **Adaptation and Technical Assistance**– Envisioning the opportunities for these license types using a collaborative community approach with the Commission





Discussion

