

Protocol for the Sampling and Analysis of Finished Marijuana Products and Marijuana Products for Marijuana Establishments, Medical Marijuana Treatment Centers, and Colocated Marijuana Operations

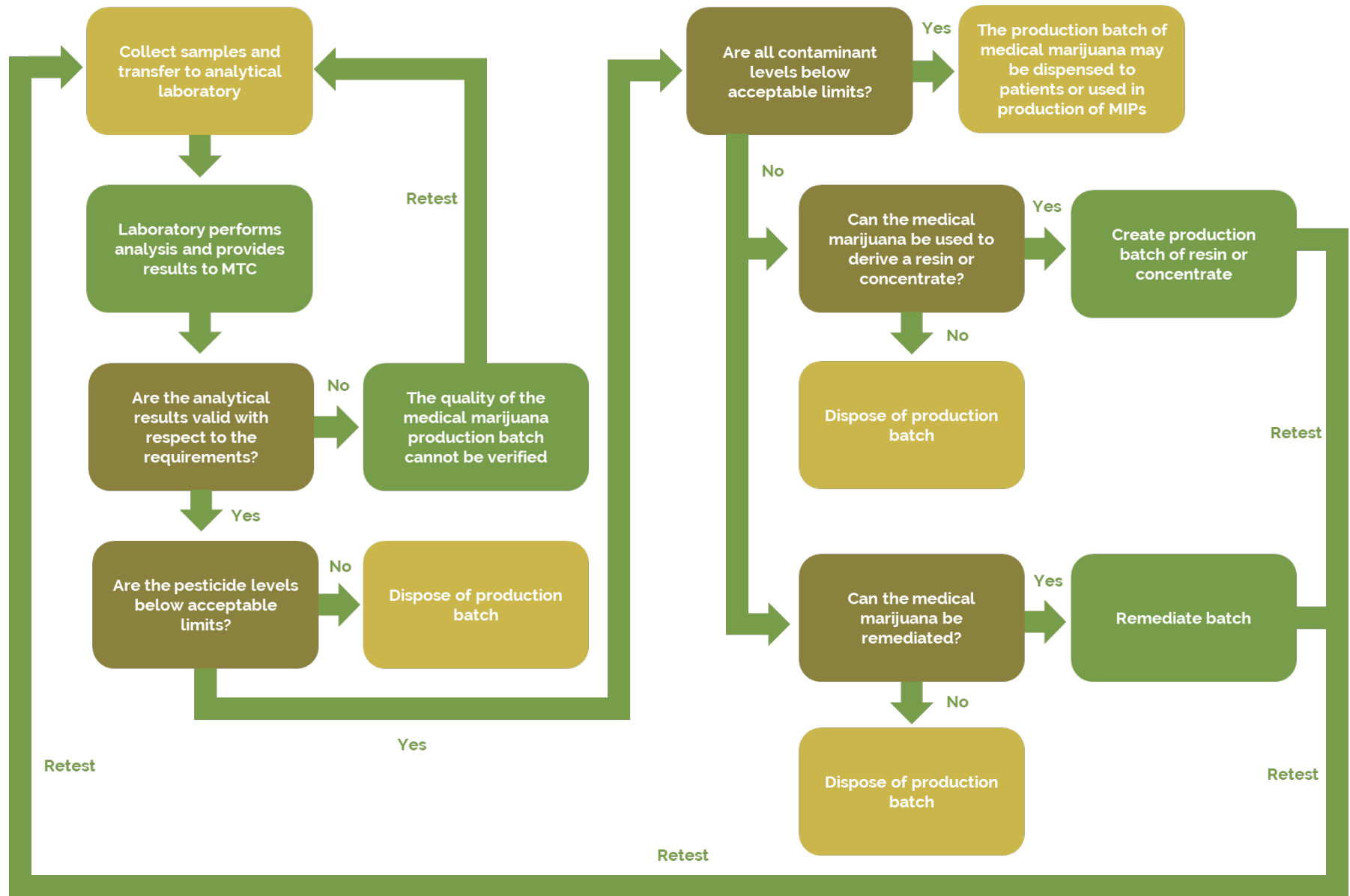
Exhibit 8. Actions in Response to Laboratory Analytical Results

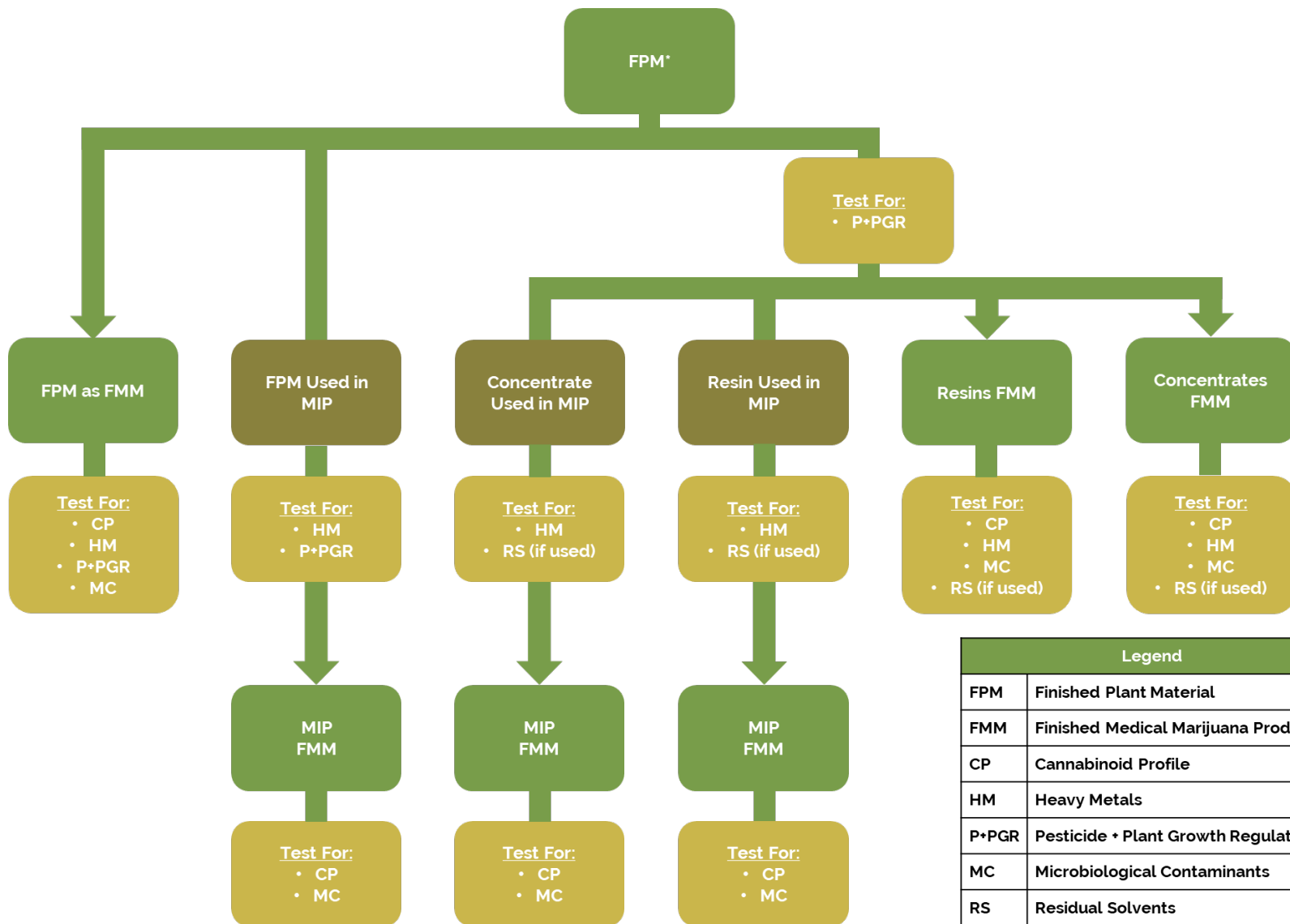
Implemented March 11, 2021 and Revised June 2, 2021

This document is issued by the Cannabis Control Commission. The applicable Marijuana laws, which include M.G.L. c. 94I, 94G, 935 CMR 500.000 and 935 CMR 501.000, should be reviewed as they may provide or clarify the legal requirements related to this document. This protocol document should be checked periodically for revisions. Questions with regards to this document may be directed to Commission@CCCMass.com.

Please note that these Protocols are continually evaluated and revised based upon new scientific and industry information.







Legend	
FPM	Finished Plant Material
FMM	Finished Medical Marijuana Product
CP	Cannabinoid Profile
HM	Heavy Metals
P+PGR	Pesticide + Plant Growth Regulators
MC	Microbiological Contaminants
RS	Residual Solvents

*All FPM tested for P+PGR. Final product sold to patients tested for MC, CP.

