

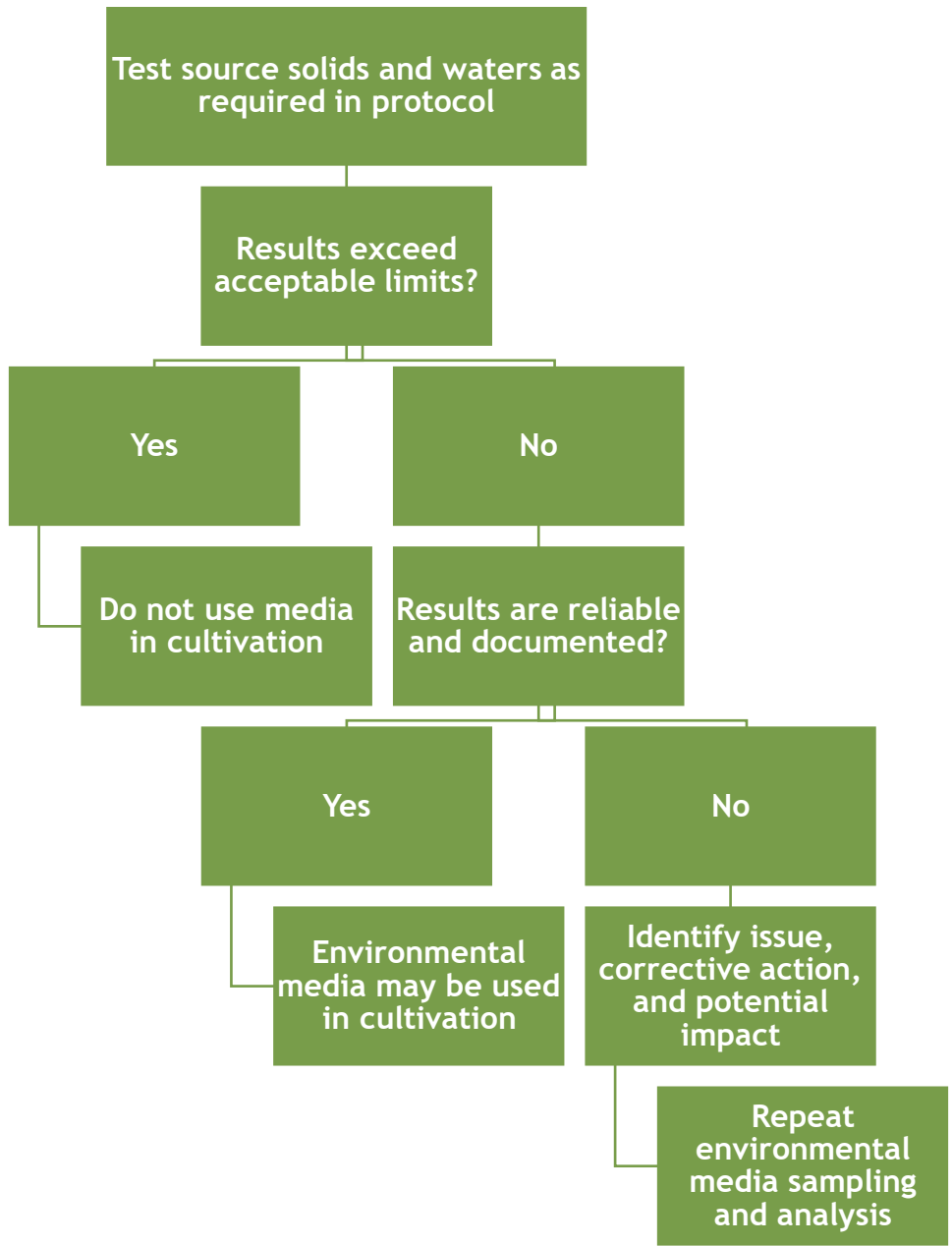
Protocol for Sampling and Analysis of Environmental Media for Massachusetts Marijuana Establishments, Medical Marijuana Treatment Centers, and Colocated Marijuana Operations

Exhibit 6. Actions for Environmental Media Analysis Prior to Cultivation

Revised March 11, 2021

This document is issued by the Cannabis Control Commission. The applicable Marijuana laws, which include M.G.L. c. 94I, 94G, 935 CMR 500.000 and 935 CMR 501.000, should be reviewed as they may provide or clarify the legal requirements related to this document. This protocol document should be checked periodically for revisions. Questions with regards to this document may be directed to Commission@CCCMass.com.





Please note that these Protocols are continually evaluated and revised based upon new scientific and industry information.

