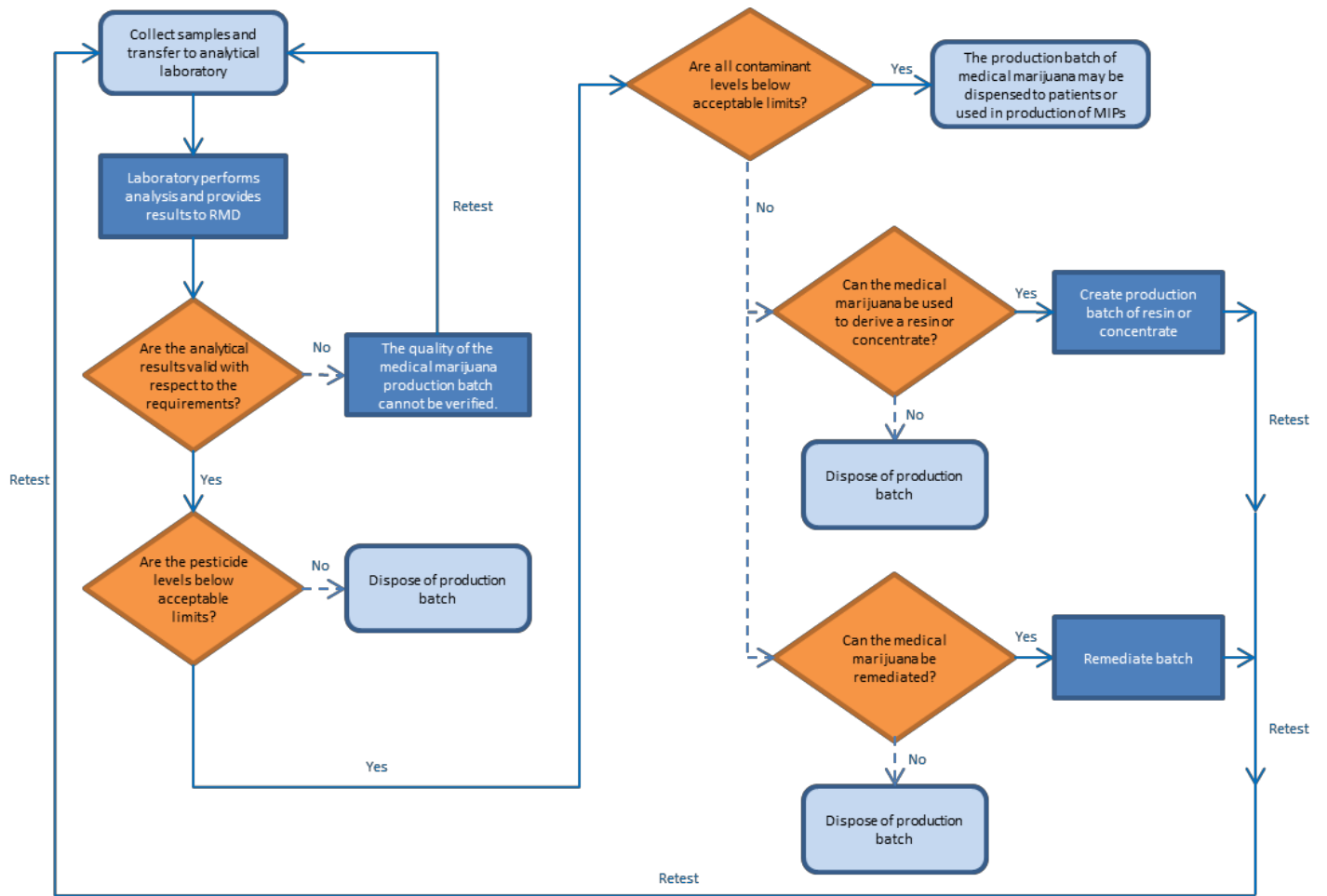


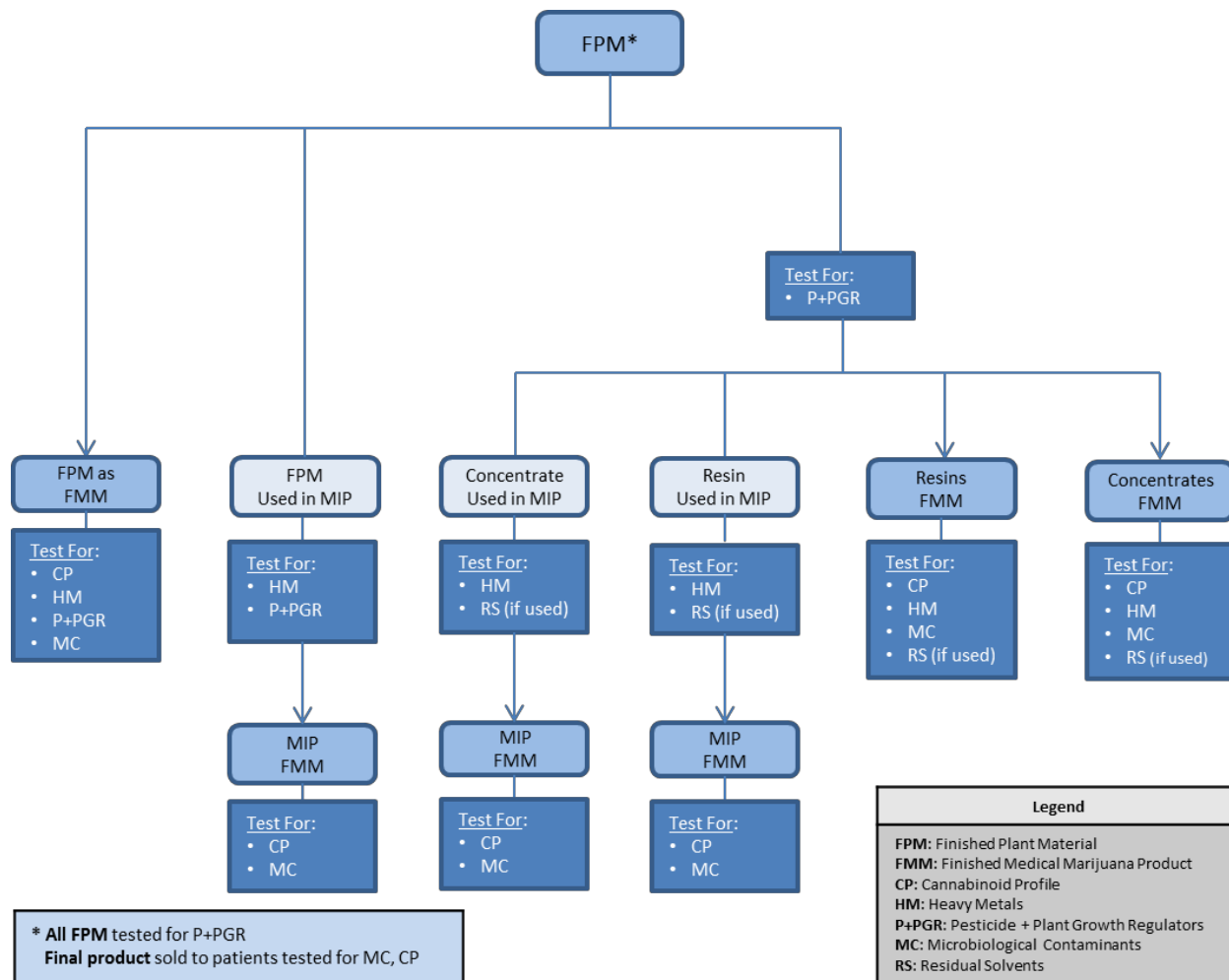
Protocol for Sampling and Analysis of Finished Medical Marijuana Products and Marijuana-Infused Products for Massachusetts Registered Medical Marijuana Dispensaries

Exhibit 8 (a). Actions in Response to Laboratory Analytical Results

This document was issued originally by the Department of Public Health (DPH). As part of the transfer of the medical-use of marijuana program on or before December 31, 2018, the Commission adopted this document. We suggest that before you rely on the contents of this document, you check the applicable medical-use marijuana laws, which include M.G.L. c. 94I and 935 CMR 501.000, as they may provide or clarify the legal requirements related to this document. We also suggest that you periodically check for revisions to this document. Questions with regards to this document may be directed to Commission@CCCMass.com.







Please note that these Protocols are continually evaluated and revised based upon new scientific and industry information.

